

NHBC NEW HOME STATISTICS ANNUAL REVIEW 2015

NHBC statistics represent a unique source of detailed up-to-date information on new home construction and the house-building industry. The figures relate to new homes registered with NHBC for its ten-year warranty, which covers around 80 per cent of all new homes built in the UK.

NHBC figures are available well ahead of Government figures. As such, we represent the only source of up-to-date information on new home registrations.

+7%

more new homes registered compared to 2014

156,140

new homes registered 2015

+5%

increase in new homes registered in the public sector compared to 2014

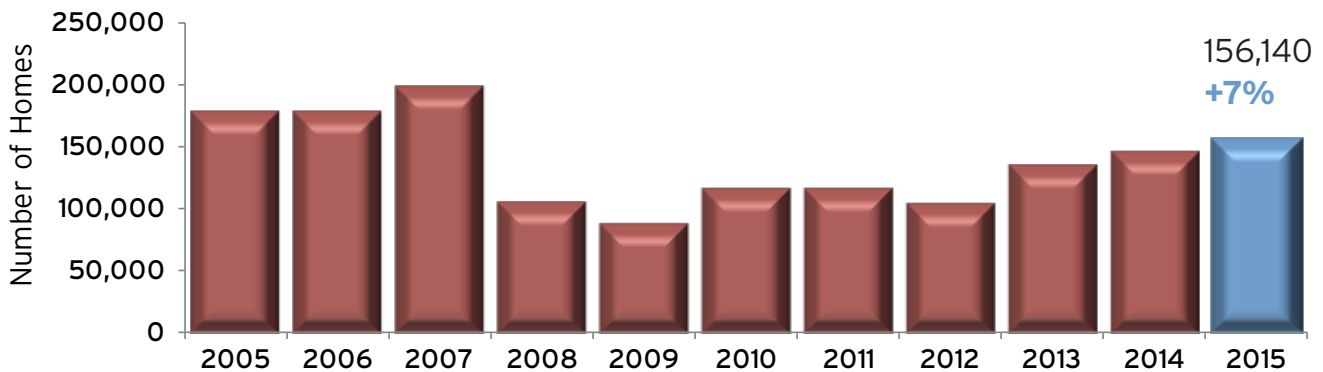
+7%

increase in new homes registered in the private sector compared to 2014

HEADLINE RESULTS FOR 2015

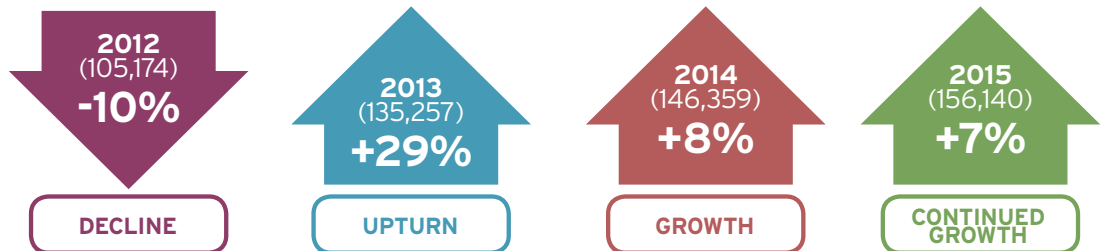
- 7% year-on-year increase in NHBC new home registrations
- In 2015, 75% more new homes registered than in 2009
- 156,140 new homes registered - representing 8 year high
- Growth in 9 out of 12 regions across the UK

REGISTRATION HISTORY



Source: NHBC (Appendix table 1). Note: Figures are derived from actual 'New-Build' registrations for NHBC's ten-year warranty.

RECOVERY AND GROWTH



Source: NHBC (Appendix table 1)



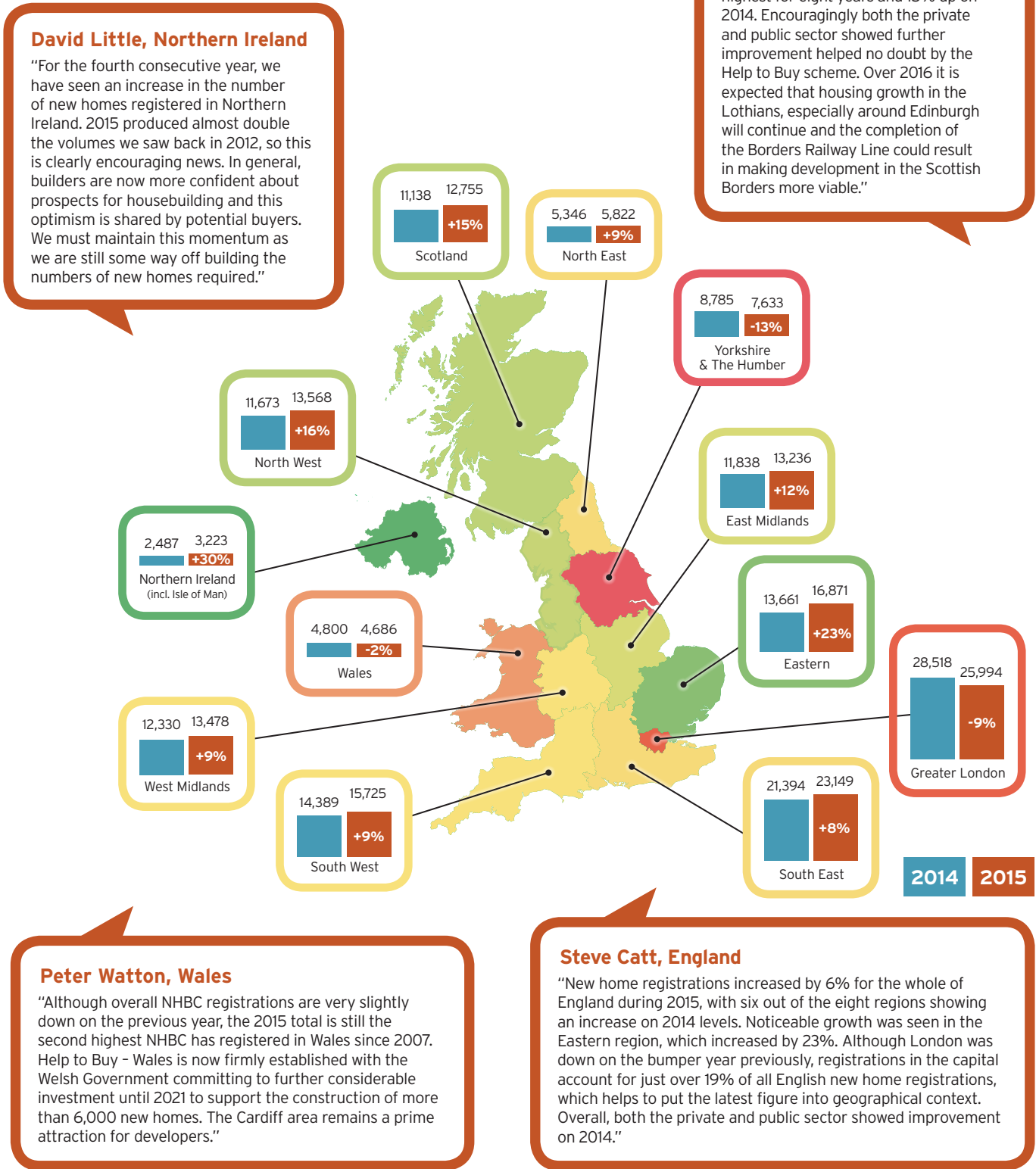
Raising Standards. Protecting Homeowners

If you would like an interview to discuss this in more detail or if you require any further information, please contact Nadia Bedra on 01908 746 734 or email nbedra@nhbc.co.uk.

Regional overview

REGIONAL REGISTRATIONS - 2015 vs 2014

Source: NHBC (Appendix table 2)

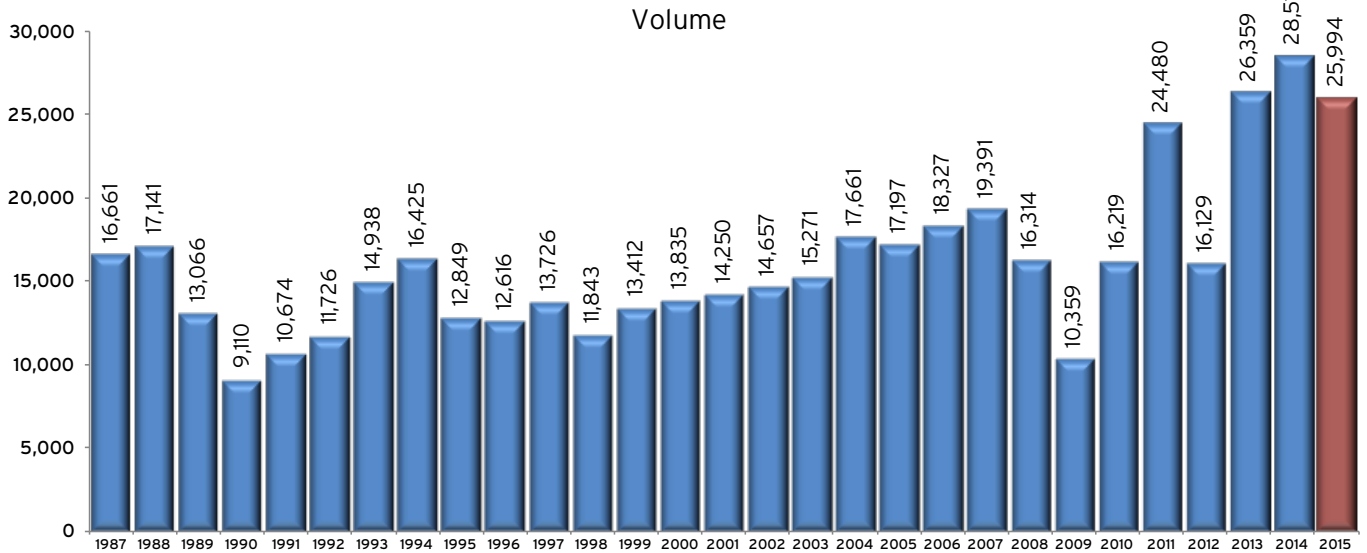


Source: NHBC (Appendix table 1)

Analysis of new home registrations

NEW HOMES REGISTERED IN LONDON

Source: NHBC (Appendix table 3)

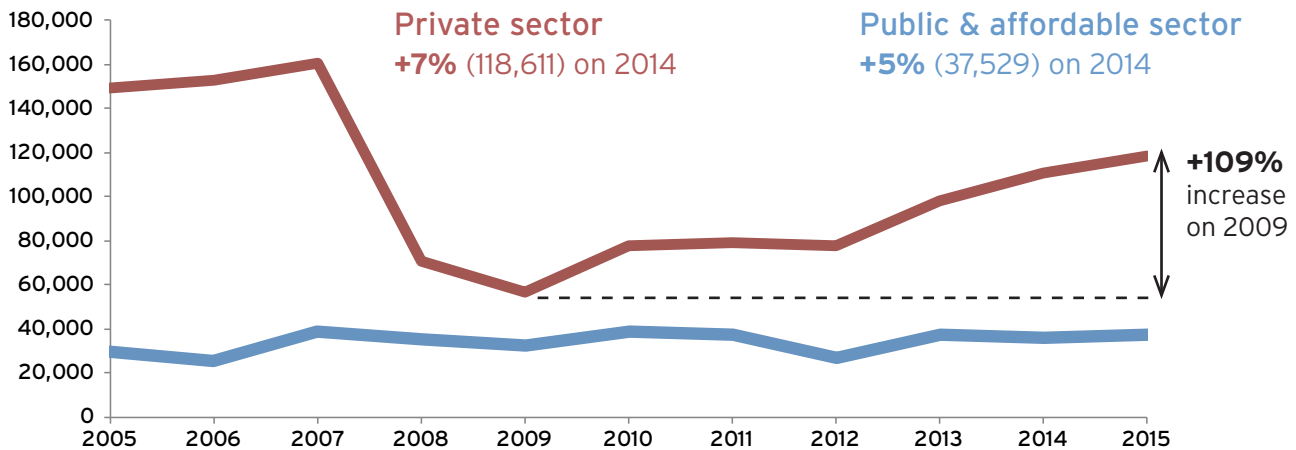


Mehban Chowdery, Head of Social Housing

"The public and affordable sector has enjoyed a positive year in the UK, with registrations up 5% on the levels seen in 2014. There was a very strong first quarter, driven by the end of the Government's Affordable Homes Programme for 2011 - 2015. This was followed by a slight dip in Q3 due to many housing associations holding back on developments in light of welfare reforms and the cap on rental increases, and a strong end to the year as they confirmed their plans. We are optimistic that although the next phase of grant funding (2015 - 2018) is much reduced, the increased development by housing associations of homes for private sale and shared ownership will help boost the number of new homes for the sector."

NEW BUILD REGISTRATIONS - PRIVATE/PUBLIC & AFFORDABLE SECTOR

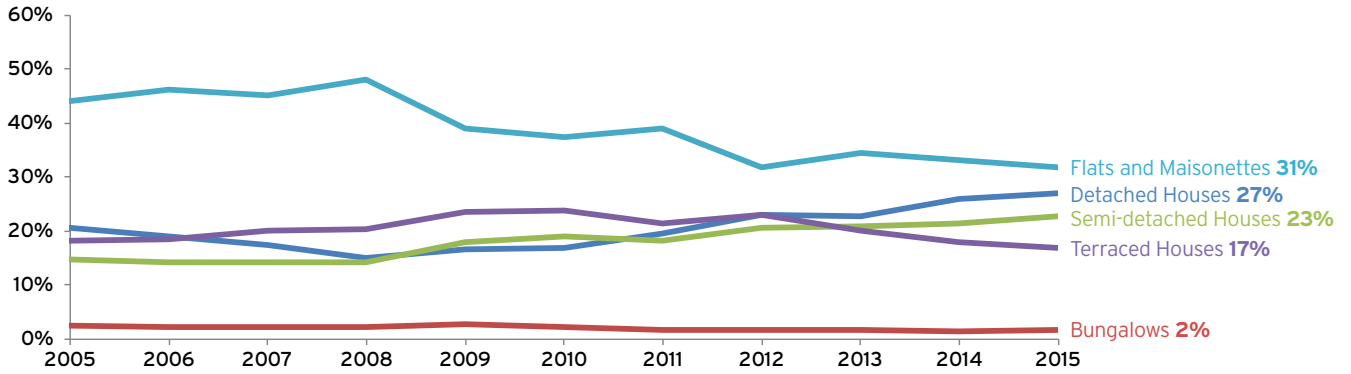
Source: NHBC (Appendix table 2)



Analysis of new home registrations

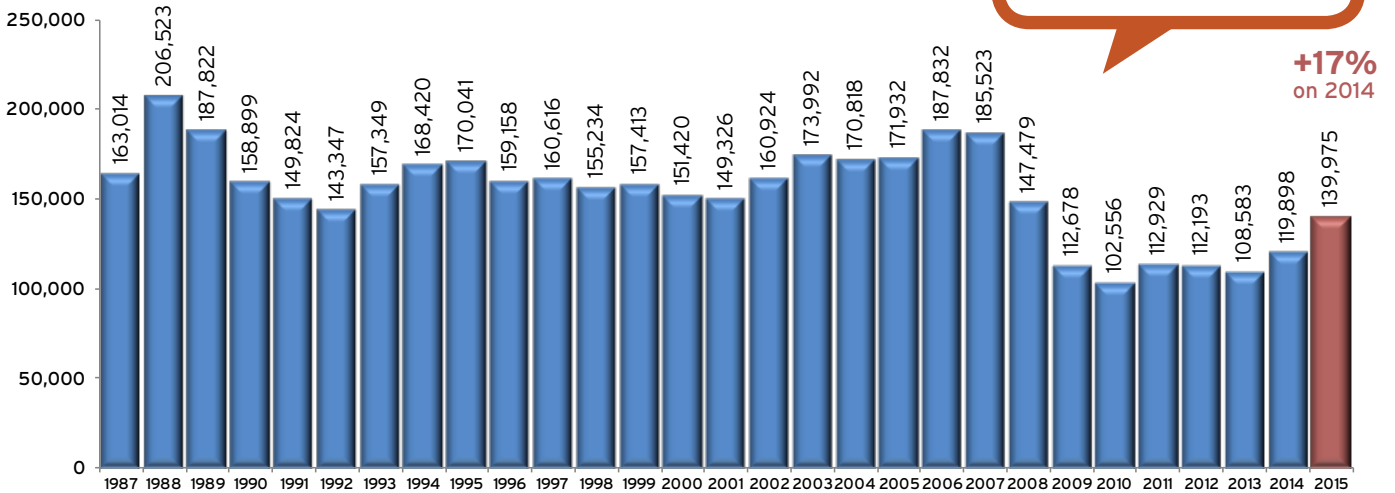
UK HOUSE TYPES

Source: NHBC (Appendix table 5)



HOMES COMPLETED

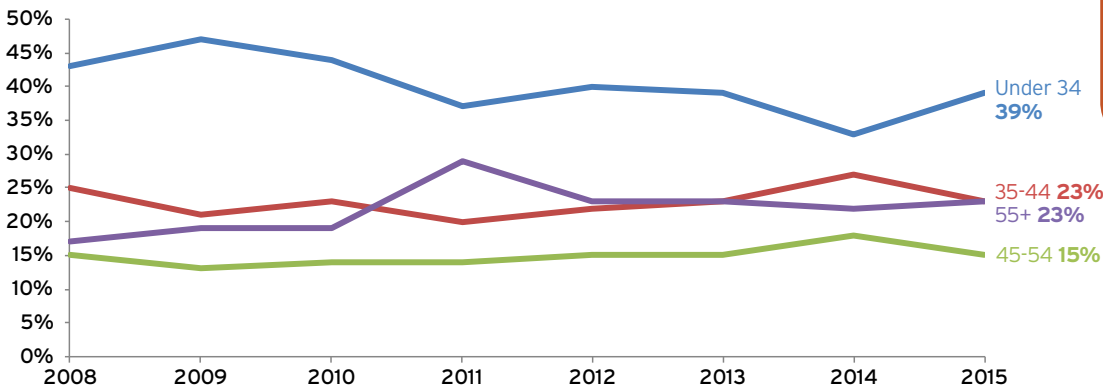
Source: NHBC (Appendix table 6)



Did you know?
New home completions were up 17% on 2014

AGE PROFILE OF NEW HOME BUYERS

Source: NHBC (Appendix table 7)



Did you know?
In 2015 almost 4 out of 10 new home buyers were aged under 34

Appendices

Table 1: Regional registration figures

	2005	2006	2007	2008	2009	2010	2011	2012	2013	2014	2015
North East	7,247	7,204	8,332	2,667	2,806	4,546	3,246	3,967	5,225	5,346	5,822
North West	17,015	16,778	17,616	7,944	6,542	8,402	8,201	8,733	11,259	11,673	13,568
Yorkshire & Humberside	12,891	12,835	13,995	6,438	4,797	7,432	5,990	5,993	7,063	8,785	7,633
West Midlands	13,759	12,376	16,052	7,357	5,785	8,910	8,048	7,914	10,740	12,330	13,478
East Midlands	14,874	16,128	15,540	7,925	7,187	9,097	7,739	7,903	10,963	11,838	13,236
Eastern	19,648	18,639	22,942	12,850	11,846	13,369	13,523	11,399	14,597	13,661	16,871
South West	14,893	16,259	18,168	10,614	10,909	13,187	11,605	11,767	13,716	14,389	15,725
Greater London	17,197	18,327	19,391	16,314	10,359	16,219	24,480	16,129	26,359	28,518	25,994
South East	26,636	26,663	30,629	17,664	15,432	19,583	18,904	16,990	19,497	21,394	23,149
England	144,160	145,209	162,665	89,773	75,663	100,745	101,736	90,795	119,419	127,934	135,476
Scotland	18,577	18,780	20,617	9,536	6,852	8,228	9,084	8,420	10,128	11,138	12,755
Wales	5,648	5,899	8,596	3,456	2,900	4,229	3,564	4,179	3,598	4,800	4,686
Northern Ireland (incl. Isle of Man)	10,731	8,570	7,299	3,093	3,578	3,214	2,097	1,780	2,112	2,487	3,223
UNITED KINGDOM (INCL. ISLE OF MAN)	179,116	178,458	199,177	105,858	88,993	116,416	116,481	105,174	135,257	146,359	156,140

NOTES

1. NHBC statistics are derived almost exclusively from its registered builders, who construct around 80% of the new homes built in the UK. As such, they represent a unique source of detailed, up-to-date information on new home construction and the house-building industry.
2. Changes can occur between figures published at different times owing to changes in policies and cancellations.
3. The above figures relate to 'New-Build' registrations for NHBC's ten-year warranty in the UK, including the Isle of Man.
4. NHBC registration figures are obtained as follows: A builder is required to register a house with NHBC at least 21 days before building starts.

Appendices (Continued)

Table 2: New build registrations - private and public sector

YEAR	PRIVATE	PUBLIC	YEAR	PRIVATE	PUBLIC	YEAR	PRIVATE	PUBLIC
2005	149,184	29,932	2009	56,699	32,294	2013	98,099	37,158
2006	153,164	25,294	2010	77,858	38,558	2014	110,674	35,685
2007	160,553	38,624	2011	79,234	37,247	2015	118,611	37,529
2008	70,426	35,432	2012	77,997	27,177			

NOTES

1. The above figures relate to 'New-Build' registrations for NHBC's ten-year warranty in the UK, including the Isle of Man.
2. Nationally NHBC provides warranties on approximately 80% of new homes built in the UK (including the Isle of Man).
3. Changes can occur between figures published at different times owing to changes in policies and cancellations.

Appendices (Continued)

Table 3: New homes registered in London

YEAR	VOLUME	YEAR	VOLUME	YEAR	VOLUME	YEAR	VOLUME
1987	16,661	1995	12,849	2003	15,271	2011	24,480
1988	17,141	1996	12,616	2004	17,661	2012	16,129
1989	13,066	1997	13,726	2005	17,197	2013	26,359
1990	9,110	1998	11,843	2006	18,327	2014	28,518
1991	10,674	1999	13,412	2007	19,391	2015	25,994
1992	11,726	2000	13,835	2008	16,314		
1993	14,938	2001	14,250	2009	10,359		
1994	16,425	2002	14,657	2010	16,219		

NOTES

1. The figures show New build and Solo homes registered for NHBC's ten-year warranty in London.

Appendices (Continued)

Table 4: UK house types in total registrations

YEAR	DETACHED HOUSES	BUNGALOWS	SEMI-DETACHED HOUSES	TERRACED HOUSES	FLATS AND MAISONETTES
2005	37,713	4,465	26,238	32,438	78,262
2006	34,680	3,935	25,331	32,827	81,685
2007	35,729	4,482	27,959	40,803	90,204
2008	15,890	2,524	14,977	21,310	51,157
2009	15,182	2,587	15,850	20,930	34,444
2010	20,502	2,643	22,126	27,763	43,382
2011	23,156	1,936	21,188	25,004	45,197
2012	24,202	1,728	21,509	24,234	33,501
2013	30,841	2,463	28,212	27,237	46,504
2014	38,077	2,045	31,712	26,532	47,993
2015	42,173	2,484	35,423	26,531	49,529

Table 5: UK percentage of house types in total registrations - private and public sector

YEAR	DETACHED HOUSES	BUNGALOWS	SEMI-DETACHED HOUSES	TERRACED HOUSES	FLATS AND MAISONETTES
2005	21%	2%	15%	18%	44%
2006	19%	2%	15%	18%	46%
2007	18%	2%	14%	20%	45%
2008	15%	2%	14%	21%	48%
2009	17%	3%	18%	24%	39%
2010	18%	2%	19%	24%	37%
2011	20%	2%	18%	21%	39%
2012	23%	2%	20%	23%	32%
2013	23%	2%	21%	20%	34%
2014	26%	1%	22%	18%	33%
2015	27%	2%	23%	17%	31%

NOTES

1. The figures show New build and Solo homes registered for NHBC's ten-year warranty.
2. Nationally NHBC provides warranties on approximately 80% of new homes built in the UK (including the Isle of Man).
3. These figures are based on NHBC's homeowner satisfaction survey carried out at eight weeks and nine months. Survey response from more than 100,000 surveys per year is approximately 55%.

Appendices (Continued)

Table 6: Homes completed

YEAR	TOTAL	YEAR	TOTAL	YEAR	TOTAL	YEAR	TOTAL
1987	163,014	1995	170,041	2003	173,992	2011	112,929
1988	206,523	1996	159,158	2004	170,818	2012	112,193
1989	187,822	1997	160,616	2005	171,932	2013	108,583
1990	158,899	1998	155,234	2006	187,832	2014	119,898
1991	149,824	1999	157,413	2007	185,523	2015	139,975
1992	143,347	2000	151,420	2008	147,479		
1993	157,349	2001	149,326	2009	112,678		
1994	168,420	2002	160,924	2010	102,556		

Table 7: Age profile of new home buyers

	2008	2009	2010	2011	2012	2013	2014	2015
Under 34	43%	47%	44%	37%	40%	39%	33%	39%
35-44	25%	21%	23%	20%	22%	23%	27%	23%
45-54	15%	13%	14%	14%	15%	15%	18%	15%
55+	17%	19%	19%	29%	23%	23%	22%	23%

NOTES

1. The figures show New build and Solo homes registered for NHBC's ten-year warranty.
2. Nationally NHBC provides warranties on approximately 80% of new homes built in the UK (including the Isle of Man).
3. These figures are based on NHBC's homeowner satisfaction survey carried out at eight weeks and nine months. Survey response from more than 100,000 surveys per year is approximately 55%.